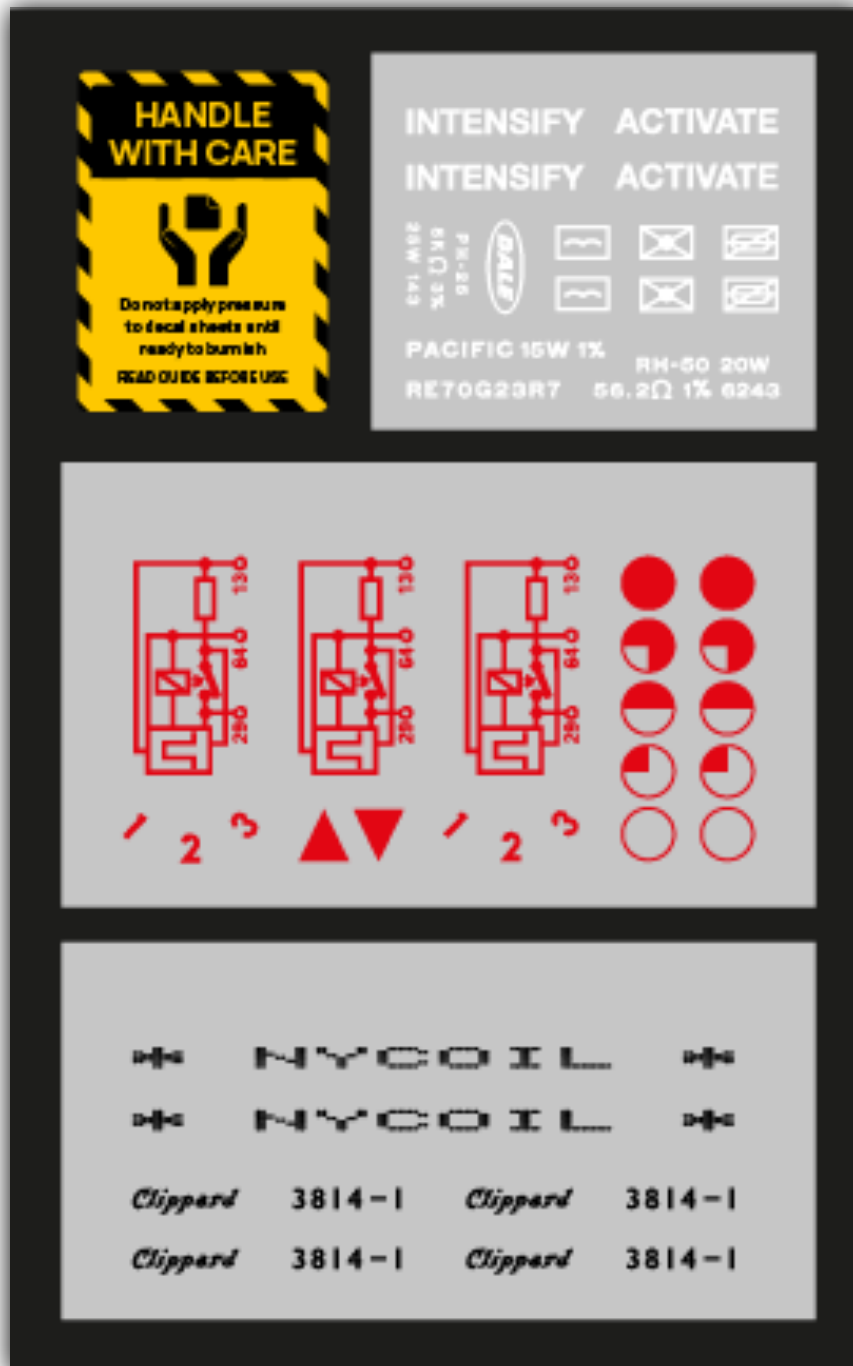


ECTØLABS

Proton Pack Dry Transfers



Installation Guide

PACK v1.0 - March 2024

INTRODUCTION

The **EctoLabs Proton Pack Dry Transfers** set contains all the individual graphical decals you need to give your Proton Pack and Neutrona Wand builds or modifications that screen-accurate finishing touch. Each graphic has been carefully recreated using reference photos of the original screen-used props to ensure their accuracy in both colour and dimension.

Unlike waterslide decals or regular stickers, these dry transfers feature incredibly crisp graphics that have no visible or raised edges - allowing you to achieve a superior 'printed on' look every time.

It is also worth noting that most graphics have at least one spare in this set which can be used in case of any mistakes, or to replace any existing worn out decals.

ABOUT YOUR DRY TRANSFERS

Your transfer set contains three individual sheets of graphical decals – one in red, one in white and one in black. These decals can be applied to the surface of your prop quickly and easily using only simple tools, with no need for any water or separate adhesives.

The decals are attached to a transparent silicone carrier that holds them in place until they are transferred to the surface of the prop. The underside of each decal has a coating of pressure-sensitive adhesive which is activated by burnishing from the top via the silicone sheet. The heat and pressure generated by this process causes the decal to stick strongly to the surface and allows for the silicone sheet to be peeled away, leaving only the decal permanently in place.

A thin paper backing is also included with each transfer sheet – this is to protect the decals from accidental burnishing before they are ready to be used.



IMPORTANT - PLEASE READ:

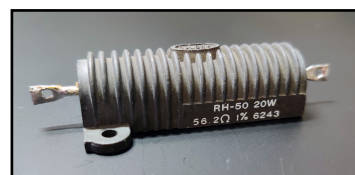
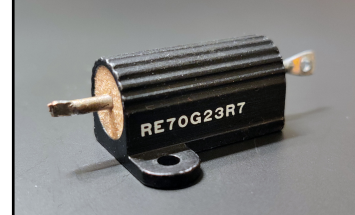
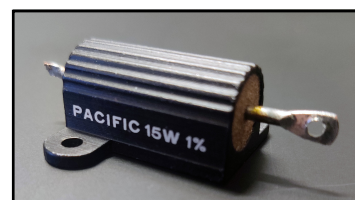
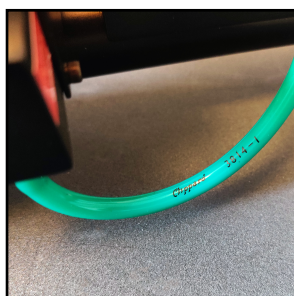
Dry transfers are very delicate, so always handle them with great care. Never touch the underside of the decals with your fingers and only hold them by the edges of the silicone carrier. To avoid spoiling the decals, do not apply any pressure to the sheets until you are ready to burnish them to your prop.

Please also bear in mind that unused dry transfers have a limited life span, so be sure to use them as soon as possible for the very best results.

DECAL PLACEMENT

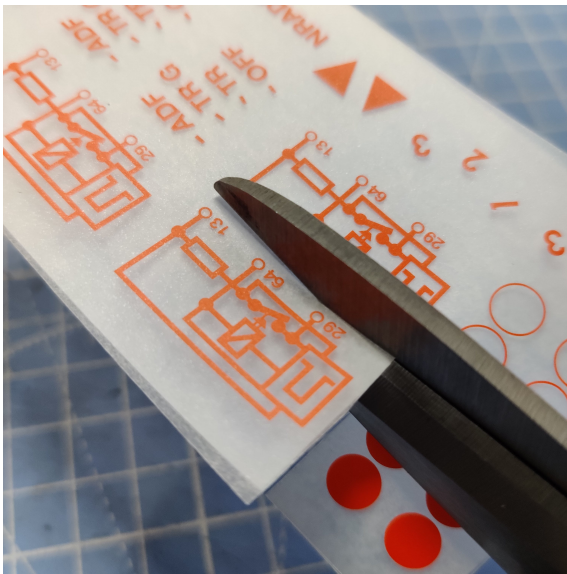
Below are our suggested placements for each of the included decals. Bear in mind that there were a number of variations in the screen-used Proton Packs and, depending on the prop you are replicating, you may find not all decals are required. We highly recommend visiting **The Ghostbusters Reference Library** if you are unsure of which configuration you need:

<https://www.theghostbustersreferencelibrary.com>



INSTALLATION INSTRUCTIONS

Applying the decals to your props is a quick and easy process. Using only simple tools, follow the steps below to achieve the perfect result every time...



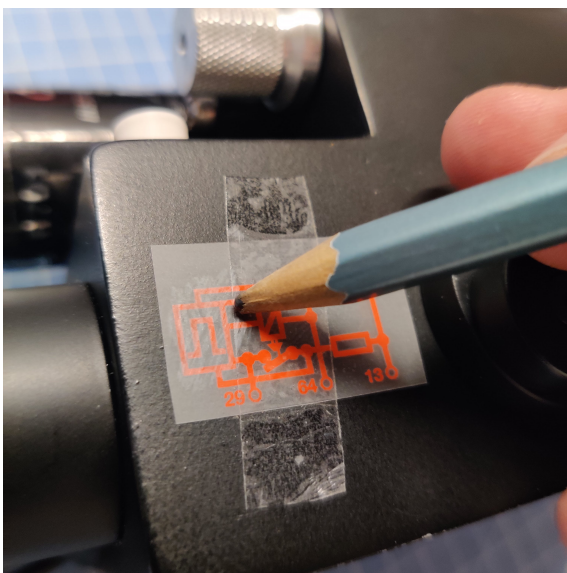
1. CUT

Using a pair of sharp scissors, cut out your required decal. Make sure you cut through both the silicone carrier and the protective paper sheet. Be careful not to damage any of the other decals as you cut. Always keep the paper sheet underneath the transfer until you are ready to install it on your prop.



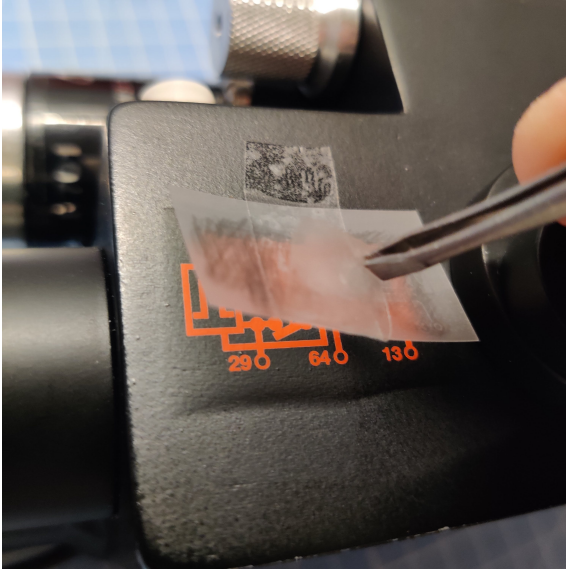
2. POSITION

Place a strip of clear tape over the top of the decal you have cut out - be sure to use a low tack tape to protect against any surface damage to your prop. Remove the paper backing and position the transfer until the graphic is in the desired position on your prop. Adjust if necessary. Do not apply any pressure to the transfer until you are happy with its placement.



3. BURNISH

Use a blunt pencil to apply even pressure over the entire footprint of the graphic. Scribble quickly over the transfer until all parts of the graphic have been burnished. You can also use a ballpoint pen or dedicated tool for this, however the lead of a pencil provides a good visual reference to where you have burnished.



4. PEEL

With the decal fully burnished, it should now have fully adhered to the surface of your prop. Carefully lift the tape and slowly remove the silicone carrier sheet, making sure to not damage any paint as you do so. Your decal should now have been evenly applied to your prop. If there are any loose sections, place the silicone sheet back over the decal and apply a little more pressure over the affected area.



5. FINISH

With your decal now successfully applied, we recommend spraying a coat or two of clear lacquer over the top to seal in the decal and help protect it from rubbing off. Use a clear coat that is correct to the surface finish of your prop.

ECTØLABS

www.ectolabs.net